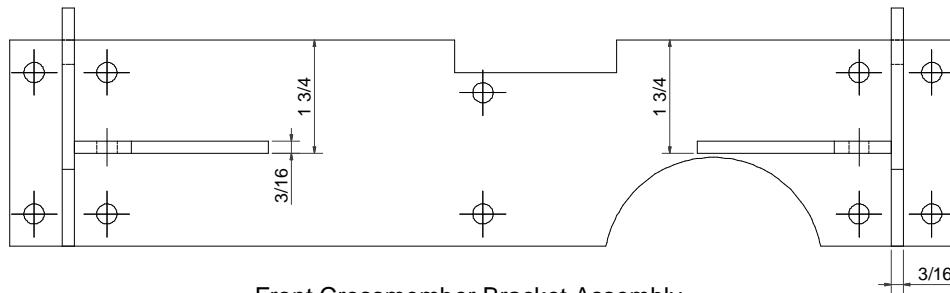
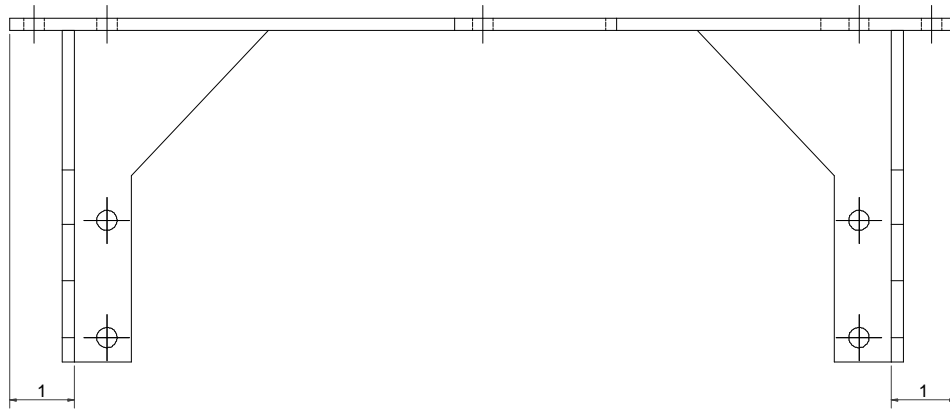
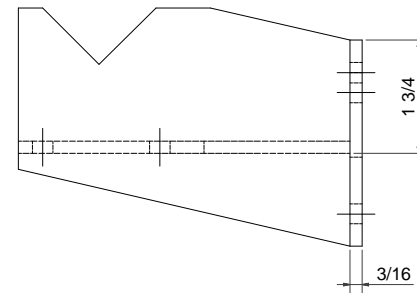
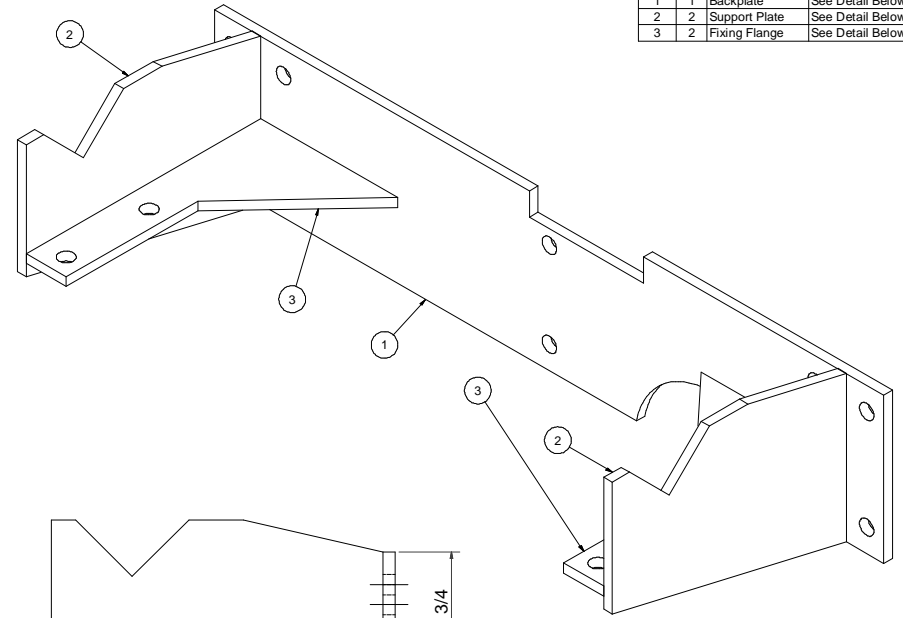


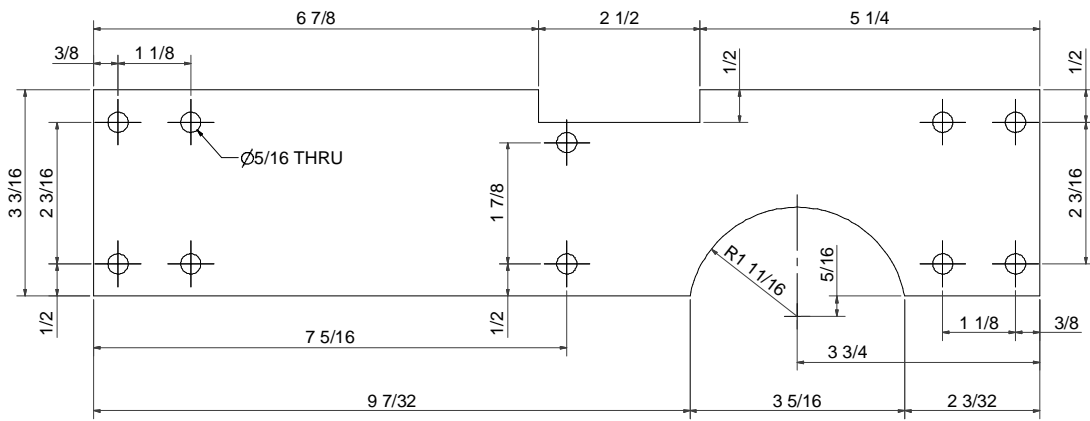
Parts List			
ITEM	QTY	PART NUMBER	DESCRIPTION
1	1	Backplate	See Detail Below
2	2	Support Plate	See Detail Below
3	2	Fixing Flange	See Detail Below



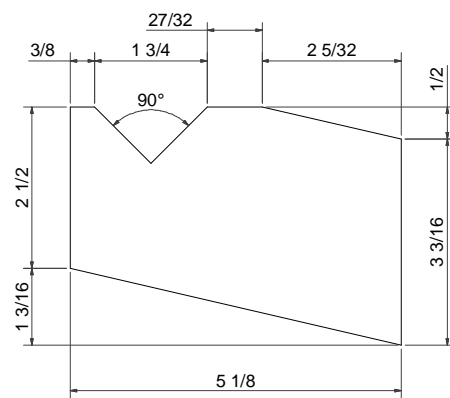
Front Crossmember Bracket Assembly



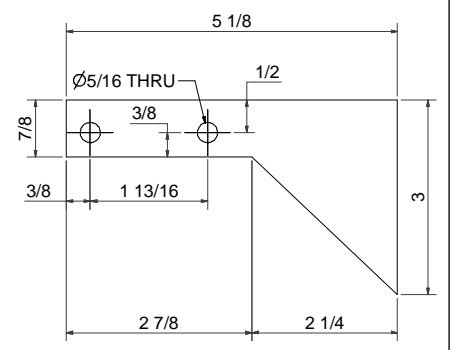
Material : MST
Finish : Natural or Hot Dip Galvanised



Backplate



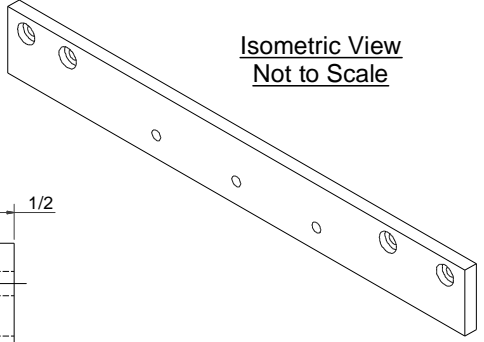
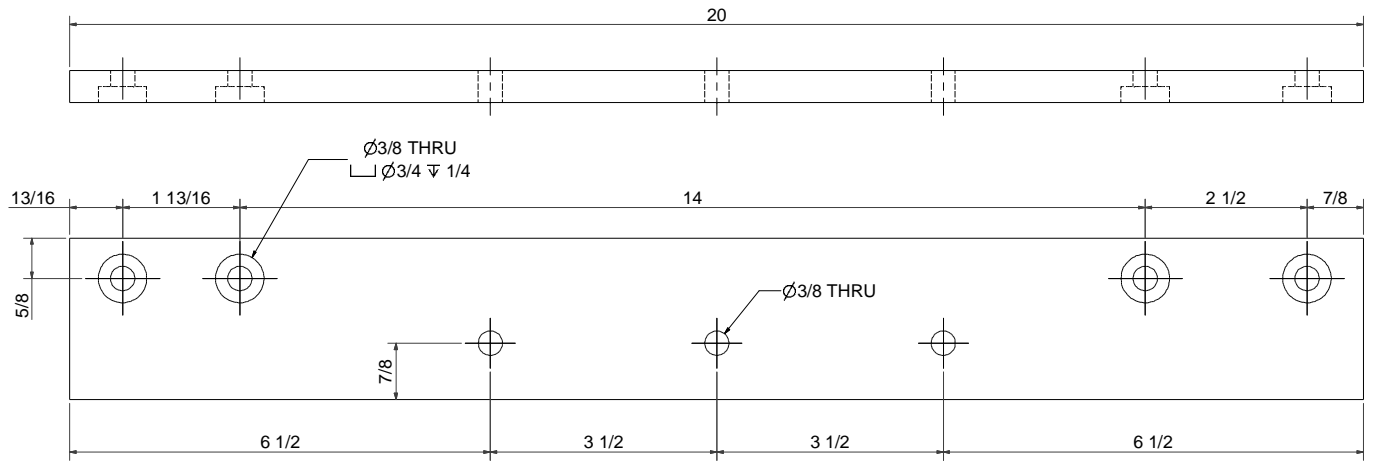
Support Plate



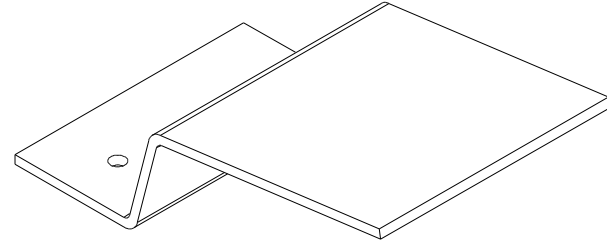
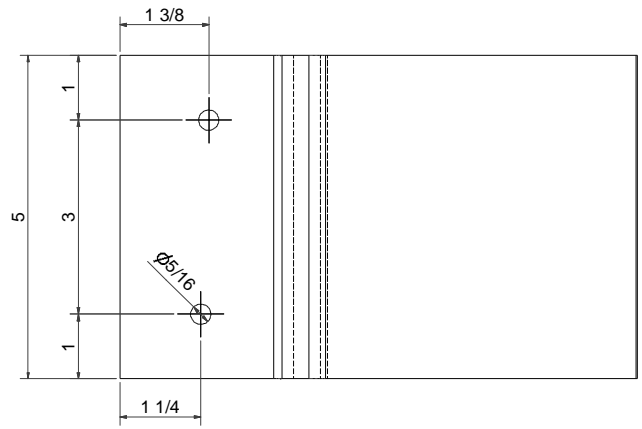
Fixing Flange

PROJECT Land Rover M.A.8 Wind Front Crossmember Bracket	SCALE 1:1
DATE 28/02/2006	REVISION A1 MAX-NK
DRAWING NO. 22901/1	THIRD ANGLE
SHEET 1 OF 5	

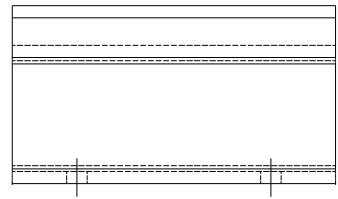
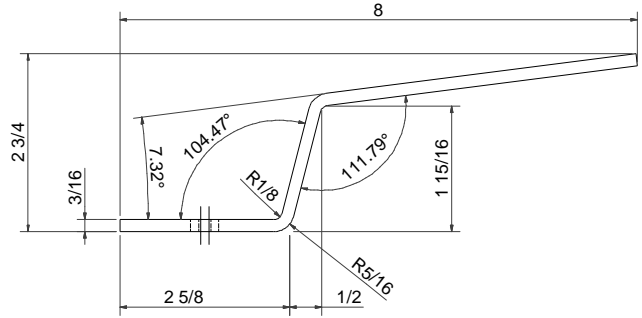
NICK



Material : MST
Finish : Natural or
Hot Dip Galvanised

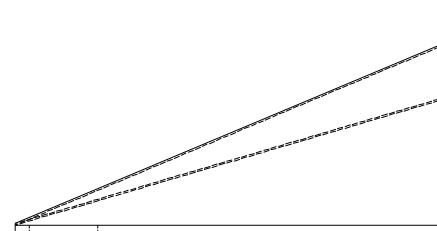
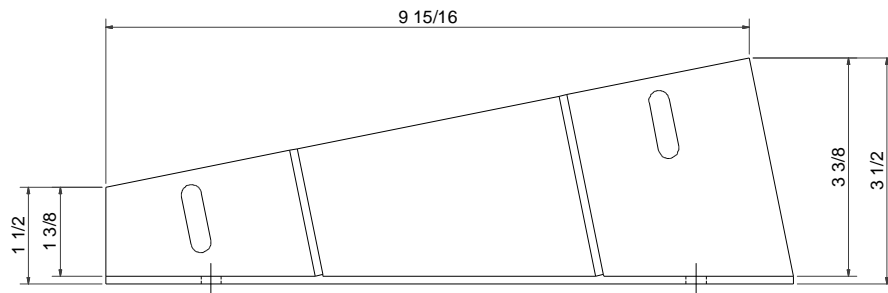
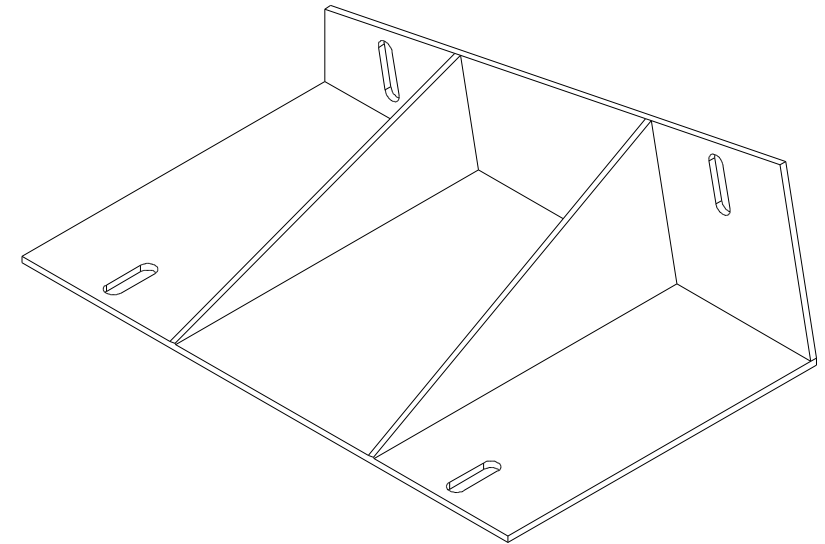
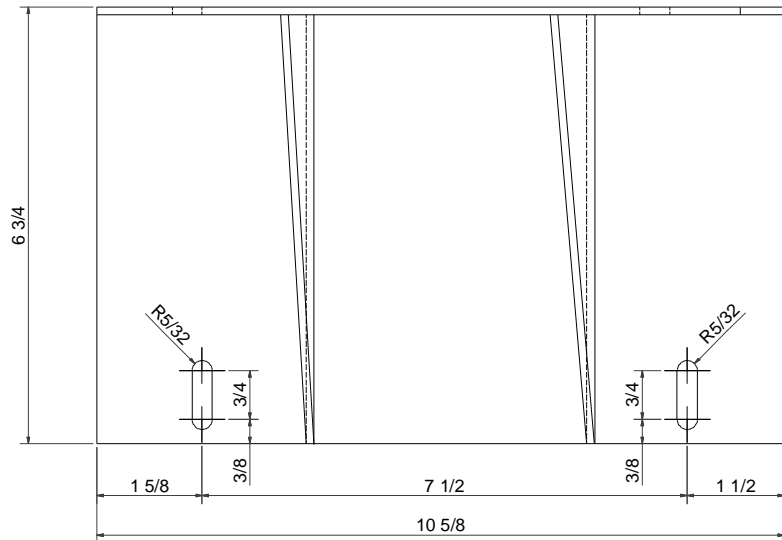
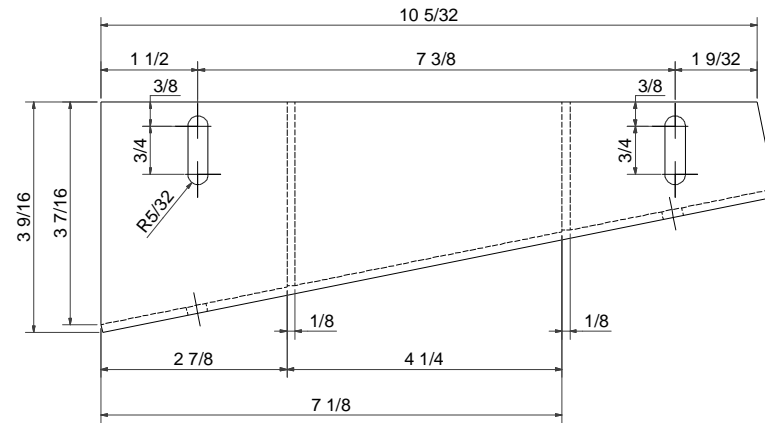
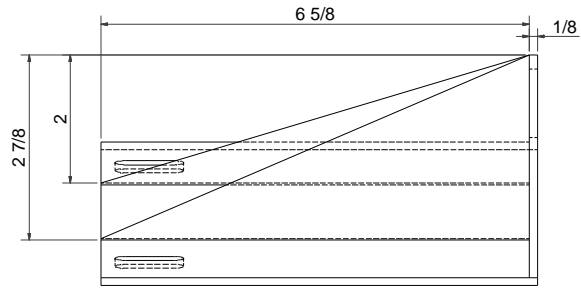


Material : MST
Finish : Natural or
Hot Dip Galvanised



PROJECT	SCALE	1:1 U.O.S.	
Land Rover M.B. Wind	DATE	01/03/2006	
Reinforcing Plate & Angled Plate	REVISION	A1	MAX-NK
General Arrangement			
DESIGN BY			
22901/2			
SHEET 2 OF 5			
	THIRD ANGLE		

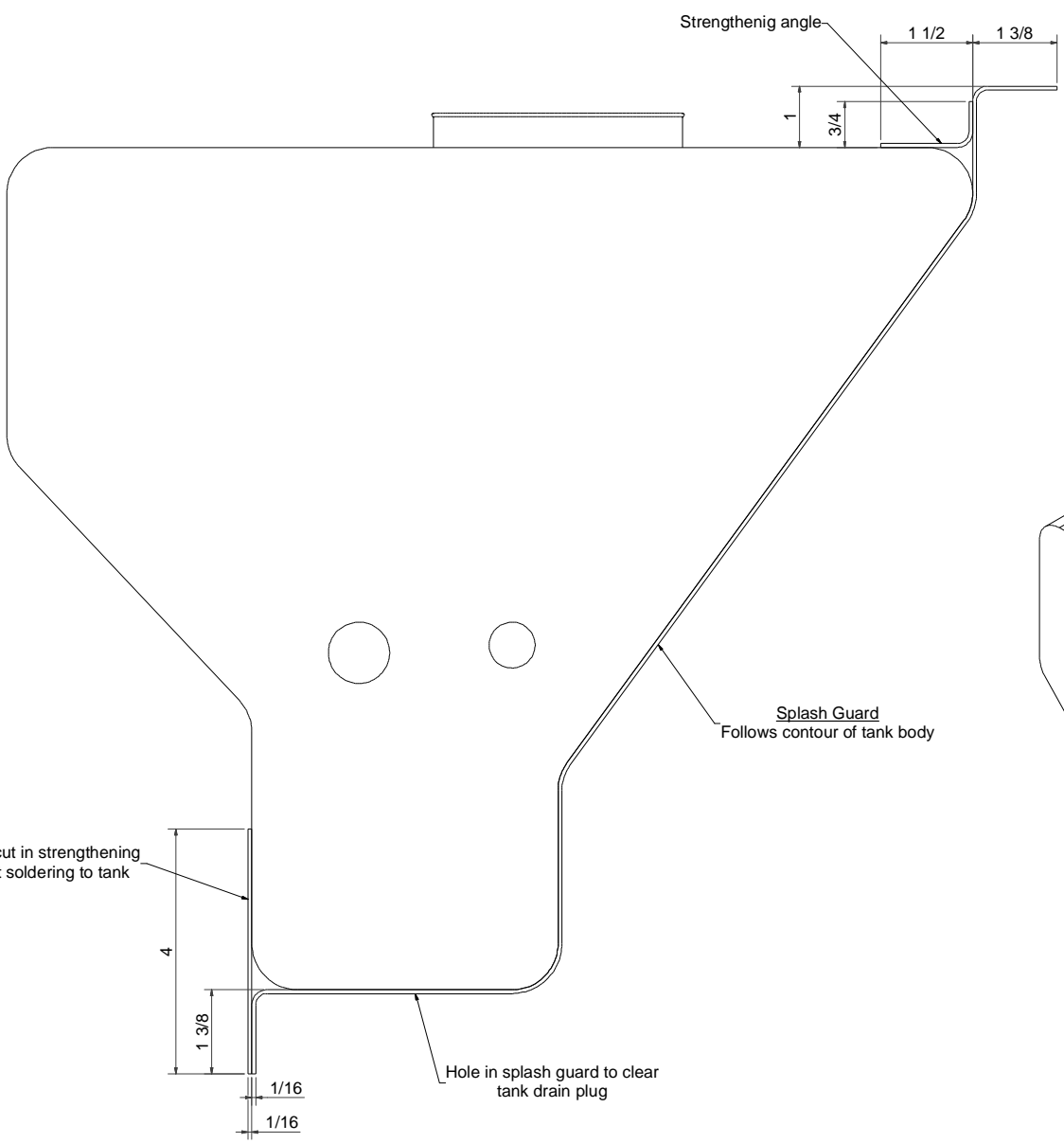
NICK



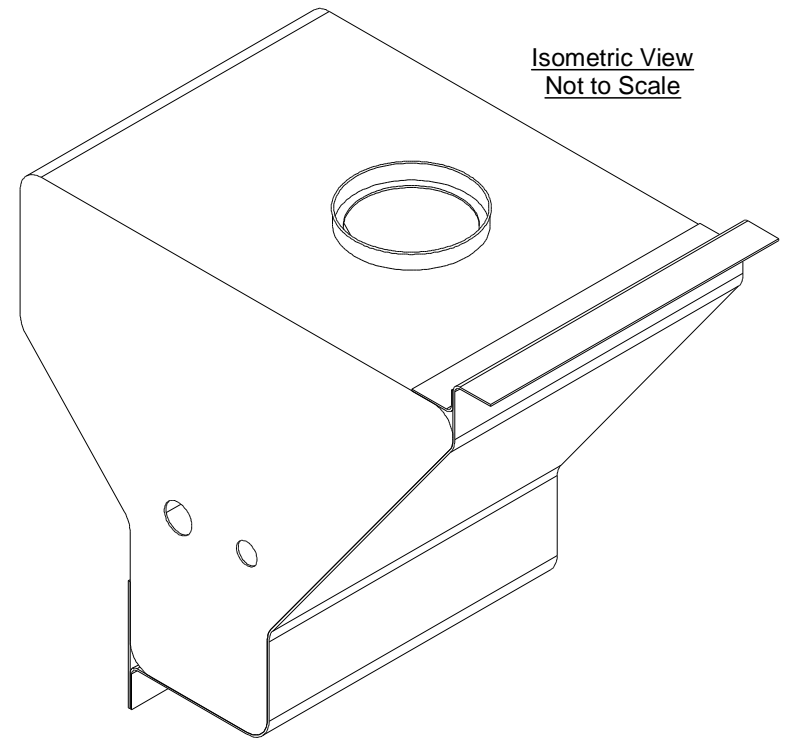
Material : MST
 Finish : Natural or
 Hot Dip Galvanised

PROJECT Land Rover M8 Winch Hydraulic Tank Bottom Bracket General Arrangement	SCALE 1:1
DRAWN BY 22901/3	DATE 02/03/2006
SHEET 3 OF 5	REVISION A1 MAX-NK
	THIRD ANGLE

NICK



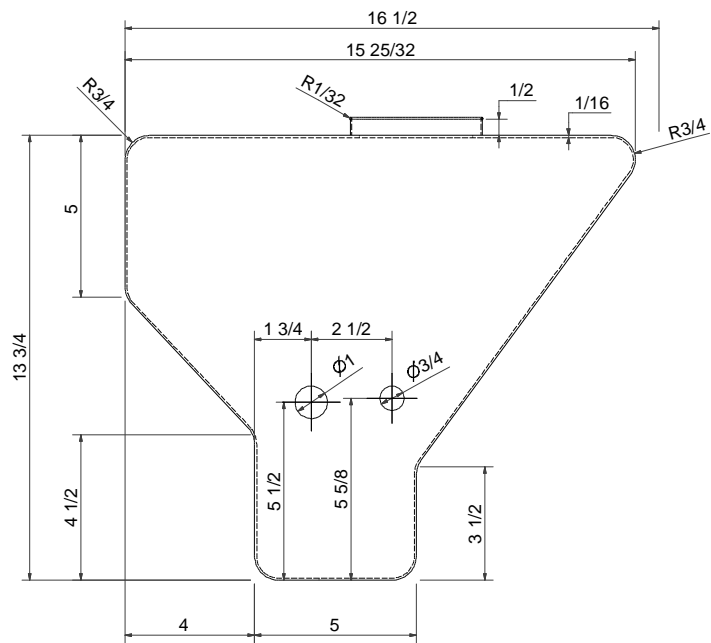
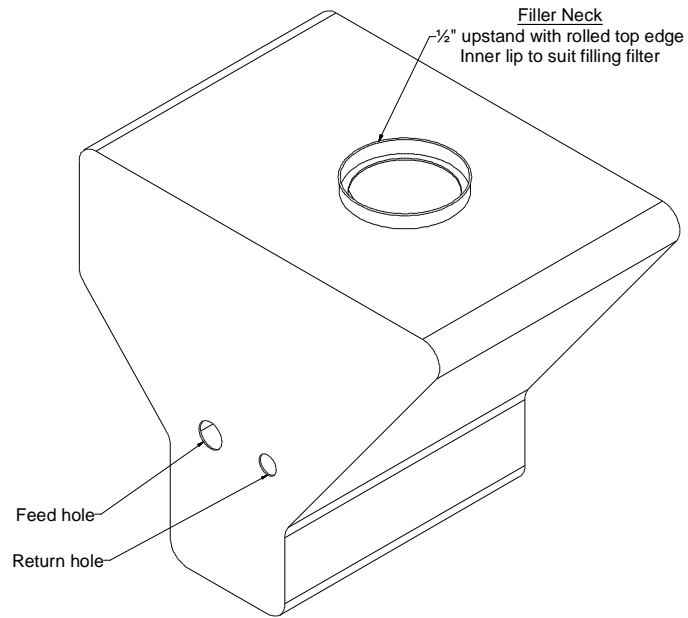
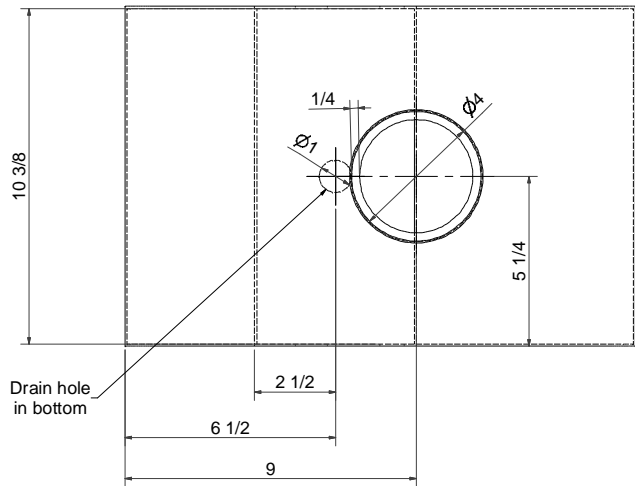
Splash Guard
Follows contour of tank body



Isometric View
Not to Scale

PROJECT Land Rover Mk.3 Winch Hydraulic Tank Assembly	SCALE 1:1 U.O.S.
DATE 26/10/2006	DESIGNER MAX-NK
REVISION A1	THIRD ANGLE
DRAWING NO. 22901/4	SHEET 4 OF 5

NICK



Feed and Return Holes

- Holes are straight through BOTH sides to allow fitting to N/S or O/S of rear tub.
- Dimensions given are for O/D of connection flanges
- Flanges screw into threaded adaptors in tank sides

Feed hole has an output flange on the chassis side with a pick-up pipe inside the tank, which is surrounded by a gauze filter.

The body side holds a blanking plug which also supports the pick-up pipe.

Return hole has an output flange on the chassis side and a blanking plug on the body side.

PROJECT Land Rover M.B. Winch Hydraulic Tank Detail	SCALE 1:2
DATE 25/10/2006	
DRAWN BY 22901/5	REVISION A1
SHEET 5 OF 5	DESIGNER MAX-NK
	THIRD ANGLE

NICK